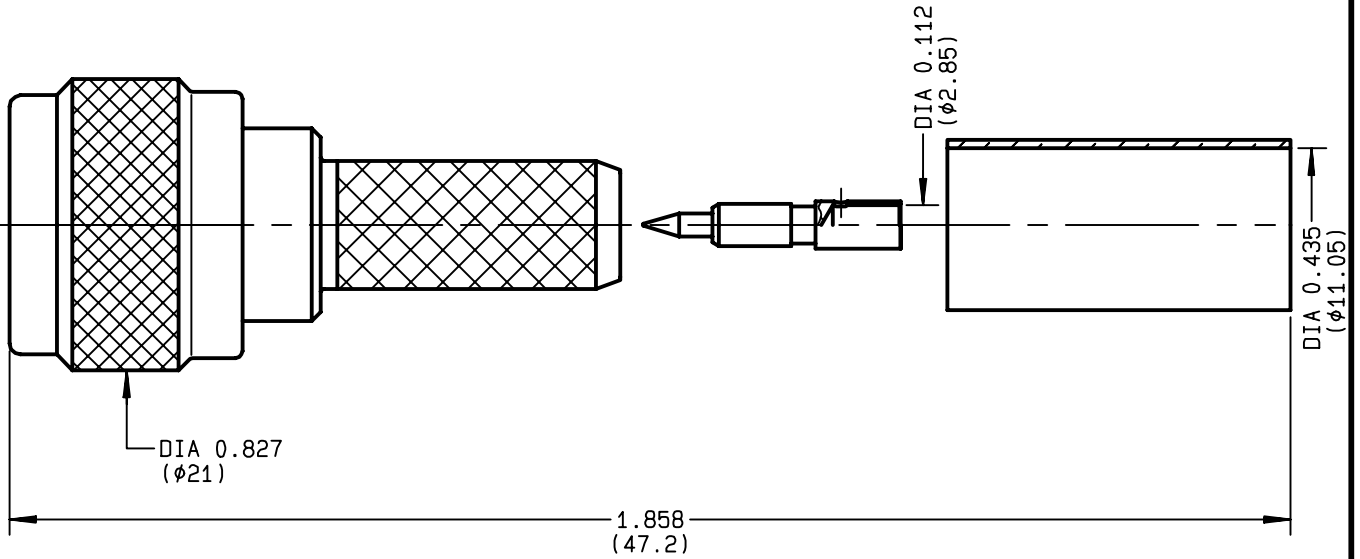


**STRAIGHT PLUG CRIMP TYPE  
CABLE LMR400**

**R161.075.036**  
**SERIES N**



NOMINAL IMPEDANCE	<b>50</b> Ω	CABLES : <b>LMR 400</b> <b>LMR 400 FR</b>
FREQUENCY RANGE	<b>0-11</b> GHz	
TEMPERATURE RATING	<b>-55/+155</b> °C	
V.S.W.R	<b>1.4</b> + x F(GHz)Maxi	
RF INSERTION LOSS	<b>0.048</b> √F(GHz) dB Maxi	
VOLTAGE RATING	<b>1400</b> Veff Maxi	
DIELECTRIC WITHSTANDING VOLTAGE	<b>2500</b> Veff Mini	
INSULATION RESISTANCE	<b>5000</b> MΩMini	
HERMETIC SEAL	<b>NA</b> Atm.cm <sup>3</sup> /s	
LEAKAGE (pressurized only)	<b>NA</b>	
MECHANICAL DURABILITY	<b>500</b> Cycles	OTHERS CHARACTERISTICS
WEIGHT	<b>37</b> gr	CABLE RETENTION <b>300</b> N Mini
SPECIFICATION		CENTER CONTACT RETENTION
		Axial force - mating end <b>27</b> N Mini
		Axial force - opposite end <b>27</b> N Mini
		Torque <b>NA</b> cm.N Mini
		RECOMMENDED TORQUES
		Mating <b>130</b> cm.N
		Panel nut <b>NA</b> cm.N
		Clamp nut <b>NA</b> cm.N

CONNECTOR PARTS	MATERIALS	FINISH (all values are given in micrometers)
BODY	BRASS	SILVER 5 OVER COPPER 0.5
OUTER CONTACT	BRASS	SILVER 5 OVER COPPER 0.5
CENTER CONTACT	BRASS	GOLD 0.8 OVER NICKEL 2
INSULATOR	PTFE	-
GASKET	SILICONE RUBBER	-
OTHERS PIECES	BRASS	SILVER 5 OVER COPPER 0.5

ISSUE	CREATION DATE	FILE PART-NUMBER
<b>9835D00</b>	<b>17/02/1995</b>	<b>95-0400-751</b>



MASTRIANO

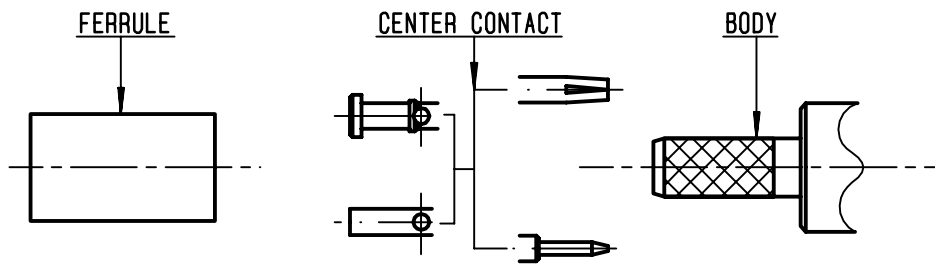
The information given here is subject to change without notice. Design changes may be in order to improve the product .

*Connect to the future*



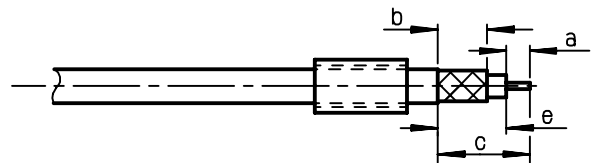
**R161.075.036**

ISSUE **9835D00** SERIES **N**



①

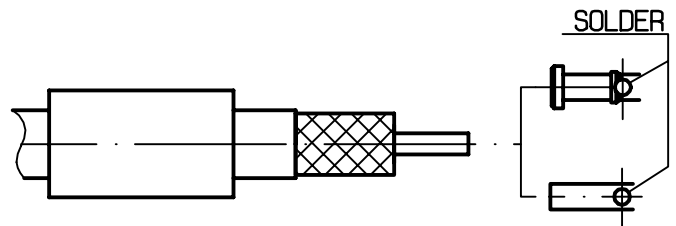
Slide onto the cable the ferrule.  
-  
Strip the cable .  
-  
-



Stripping	a	b	c	d	e
inch	0.189	0.831	1.114	0	0.925
mm	4.8	21.1	28.3		23.5

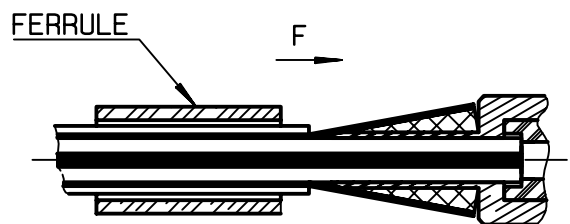
②

Slide on center contact until it bottoms against cable dielectrique .  
Solder center contact .  
Clean soldering area .  
-  
-  
-



③

Fan the braid .  
Slide cable dielectric into the body while gently guiding the braid over the knurl .  
Push until the dielectric clicks into position.  
Slide ferrule over braid in direction F.



④

Crimp the ferrule with crimping tool R 282 231 000 ( Hex. : 0.415 ) or crimping tool R 282 293 000 ( M22520/5-01 ) + dies R 282 235 116 ( Y 116 DANIELS ).  
Cut the excess of braid.  
-

